

NOT FOR CONSTRUCTION SAMPLE PLAN

NOT FOR CONSTRUCTION SAMPLE PLAN

CrookstonDesigns.com

NOT FOR CONSTRUCTION SAMPLE PLAN

- PAGE 1 COVER PAGE
- PAGE 2 MAIN FLOOR PLAN
- PAGE 3 FOUNDATION/BASEMENT PLAN
- PAGE 4 UPPER FLOOR PLAN
- PAGE 5 ELEVATIONS
- PAGE 6 ELEVATIONS
- PAGE 7 SECTIONS & DETAILS
- PAGE 8 LEGEND AND NAILING SCHEDULE
- PAGE 9 ELECTRICAL



DESCRIPTION
STOCK PLAN
DATE
6/7/2014

SHEET TITLE:
COVER PAGE

PROJECT DESCRIPTION:

THESE PLANS DO NOT HAVE ARCHITECTURAL OR ENGINEERING SIGNATURE, SEAL OR STAMP. IT IS THE RESPONSIBILITY OF THE HOME OWNER OR CONTRACTOR TO OBTAIN ONE TO VERIFY ALL BEAMS, DIMENSIONS, CONNECTIONS, STRUCTURAL STABILITY AND ALL DETAILS ASSOCIATED WITH THE CONSTRUCTION AND STABILITY OF THE STRUCTURE. THESE DRAWINGS ARE ONLY TO BE USED FOR THE CONSTRUCTION OF A SINGLE STRUCTURE. PLEASE VISIT WWW.CROOKSTONDESIGNS.COM FOR MORE DETAILS.

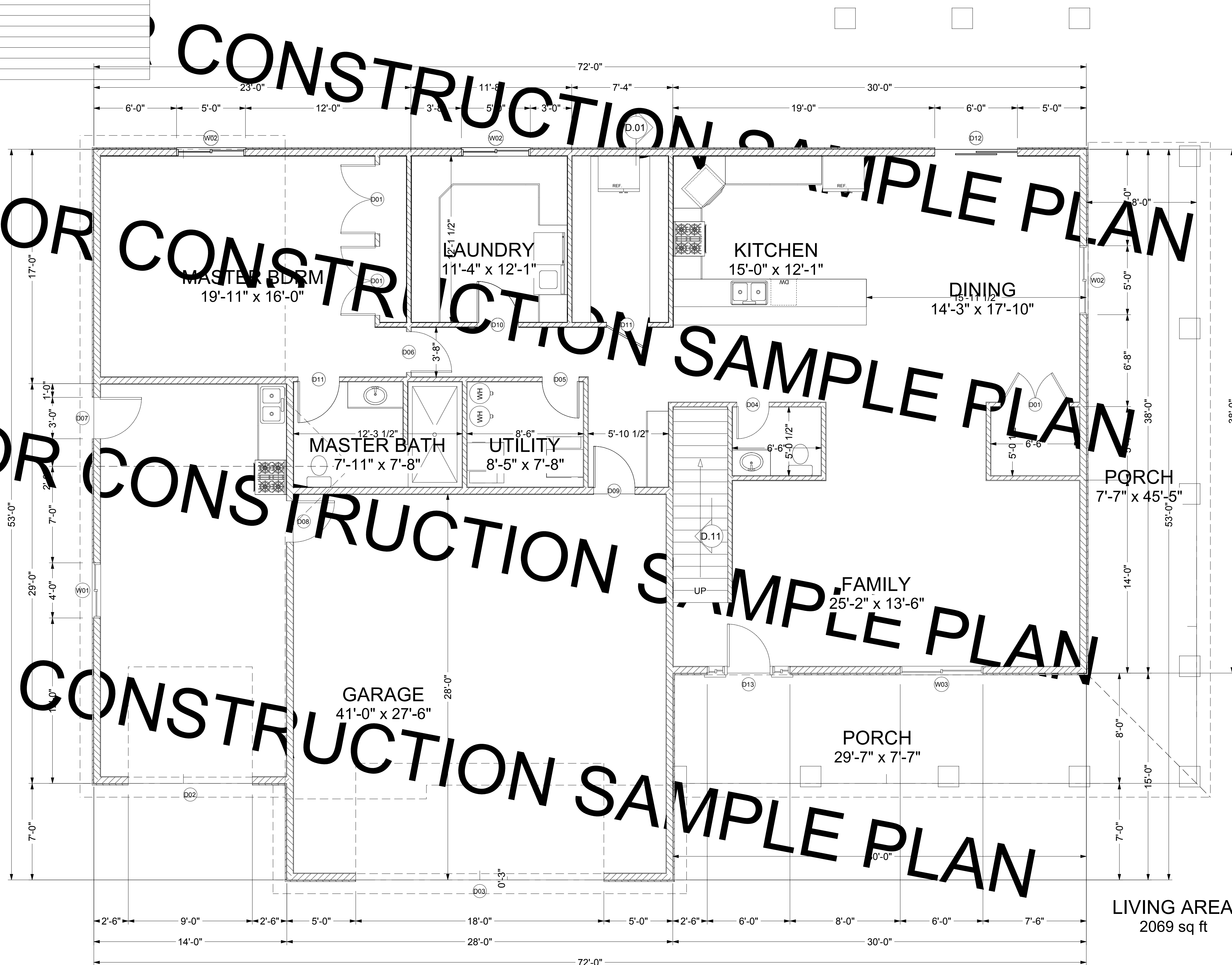
DRAWINGS PROVIDED BY:
CrookstonDesigns.com
1712 East 2450 North
North Logan, Utah 84341
Phone: (435) 757-2906
Fax: (866) 801-0230
www.CrookstonDesigns.com

Plan #
12026.00
SCALE:
1/4" = 1'
SHEET:
1

DOOR SCHEDULE					
NUMBER	QTY	FLOOR	DIMENSIONS	R/O	COMMENTS
D01	3	1	(2) 30"x80"x1 3/8" IN	62X82 1/2	
D02	1	1	108"x96"x1 3/4" L	110X98 1/2	
D03	1	1	216"x96"x1 3/4" L	218X98 1/2	
D04	1	1	28"x80"x1 3/8" R IN	30X82 1/2	
D05	1	1	32"x80"x1 3/8" L IN	34X82 1/2	
D06	1	1	35 1/2"x80"x1 3/8" R IN	37 1/2X82 1/2	
D07	1	1	36"x80"x1 3/4" L EX	38X82 1/2	
D08	1	1	36"x80"x1 3/4" L IN	38X82 1/2	
D09	1	1	36"x80"x1 3/8" L EX	38X82 1/2	
D10	1	1	36"x80"x1 3/8" L IN	38X82 1/2	
D11	2	1	36"x80"x1 3/8" R IN	38X82 1/2	
D12	1	1	72"x80"x1 3/4" L EX	74X82 1/2	
D13	1	1	72"x98"x1 3/4" L EX	72X98	
D14	3	2	(2) 24"x80"x1 3/8" IN	50X82 1/2	
D15	3	2	30"x80"x1 3/8" R IN	32X82 1/2	
D16	2	2	32"x80"x1 3/8" L IN	34X82 1/2	
D17	1	2	32"x80"x1 3/8" R IN	34X82 1/2	
D18	1	2	36"x80"x1 3/8" L IN	38X82 1/2	

WINDOW SCHEDULE						
NUMBER	QTY	FLOOR	DIMENSIONS	R/O	DESCRIPTION	COMMENTS
W01	1	1	48"x48"LS	48X48	LEFT SLIDING	
W02	3	1	60"x48"LS	60X48	LEFT SLIDING	
W03	1	1	72"x60"LS	72X60	LEFT SLIDING	
W04	3	2	42"x54"SH	42X54	SINGLE HUNG	
W05	1	2	48"x24"LS	48X24	LEFT SLIDING	
W06	3	2	48"x48"FX	48X48	FIXED GLASS	
W07	1	2	48"x54"SH	48X54	SINGLE HUNG	
W08	2	2	60"x48"LS	60X48	LEFT SLIDING	
W09	1	2	72"x48"LS	72X48	LEFT SLIDING	

copyright © Crookston Custom Designs 6/7/2014



LIVING AREA
2069 sq ft



DESCRIPTION
STOCK PLAN
DATE
6/7/2014

SHEET TITLE:
MAIN FLOOR PLAN
PROJECT DESCRIPTION:

THESE PLANS DO NOT HAVE ARCHITECTURAL OR ENGINEERING SIGNATURE, SEAL OR STAMP. IT IS THE RESPONSIBILITY OF THE HOME OWNER OR CONTRACTOR TO OBTAIN ONE TO VERIFY ALL BEAMS, DIMENSIONS, CONNECTIONS, STRUCTURAL STABILITY AND ALL DETAILS ASSOCIATED WITH THE CONSTRUCTION AND STABILITY OF THE STRUCTURE. THESE DRAWINGS ARE ONLY TO BE USED FOR THE CONSTRUCTION OF A SINGLE STRUCTURE. PLEASE VISIT WWW.CROOKSTONDESIGNS.COM FOR MORE DETAILS.

DRAWINGS PROVIDED BY:
CrookstonDesigns.com
Phone: (435) 757-2906
1712 East 2450 North
North Logan, Utah 84341
Fax: (866) 801-0230
www.CrookstonDesigns.com

Plan #
12026.00

SCALE:
1/4" = 1'

SHEET:
2

copyright © Crookston Custom Designs 6/7/2014



DESCRIPTION
STOCK PLAN
DATE
6/7/2014

SHEET TITLE:
FOUNDATION/BASEMENT PLAN

PROJECT DESCRIPTION:

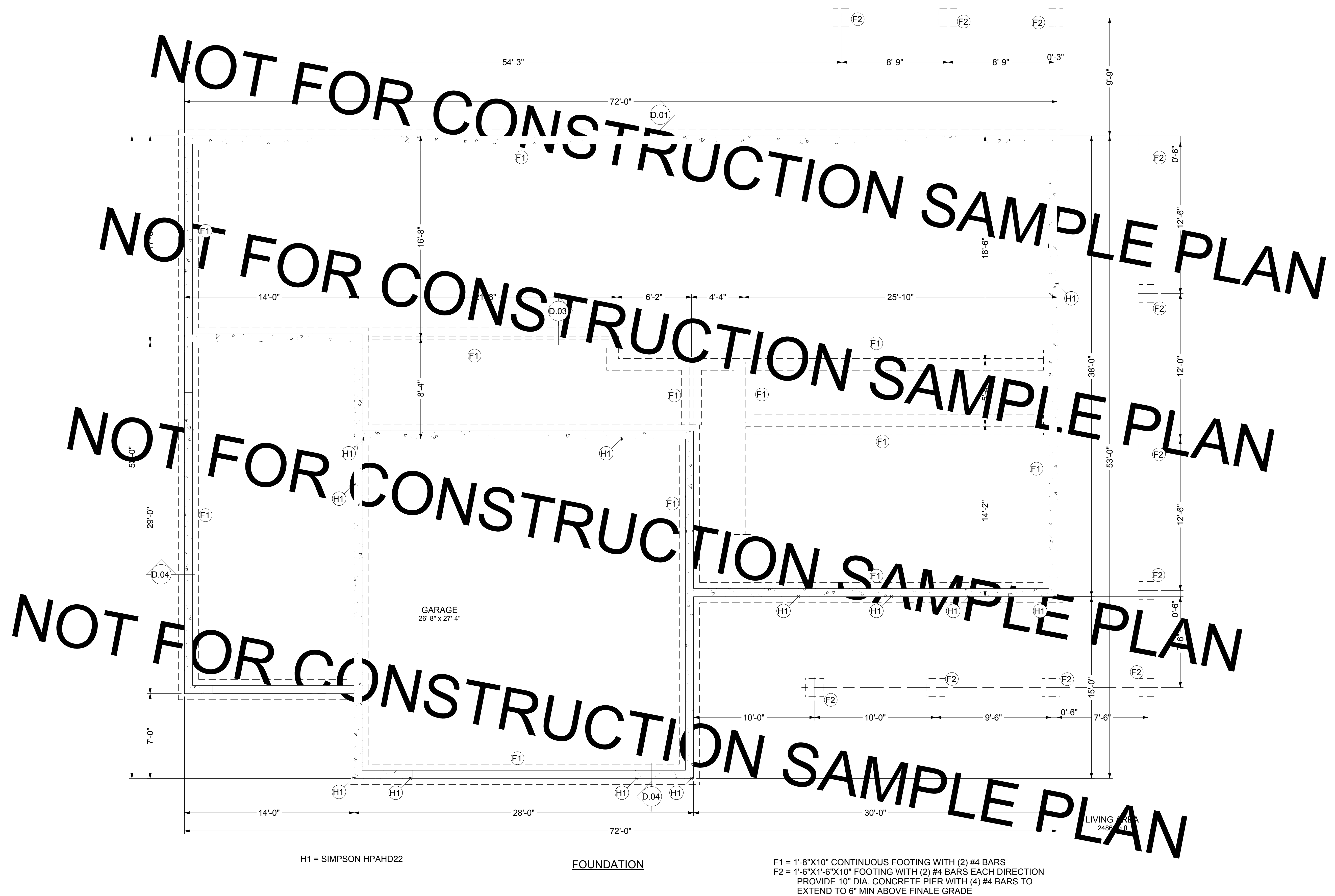
THESE PLANS DO NOT HAVE ARCHITECTURAL OR ENGINEERING SIGNATURE, SEAL OR STAMP. IT IS THE RESPONSIBILITY OF THE HOME OWNER OR CONTRACTOR TO OBTAIN ONE TO VERIFY ALL BEAMS, DIMENSIONS, CONNECTIONS, STRUCTURAL STABILITY AND ALL DETAILS ASSOCIATED WITH THE CONSTRUCTION AND STABILITY OF THE STRUCTURE. THESE DRAWINGS ARE ONLY TO BE USED FOR THE CONSTRUCTION OF A SINGLE STRUCTURE. PLEASE VISIT WWW.CROOKSTONDESIGNS.COM FOR MORE DETAILS.

DRAWINGS PROVIDED BY:
CrookstonDesigns.com
Phone: (435) 757-2906
1712 East 2450 North
North Logan, Utah 84341
Fax: (866) 801-0230
www.CrookstonDesigns.com

Plan #
12026.00
SCALE:
1/4" = 1'
SHEET:
3

copyright © Crookston Custom Designs 6/7/2014

copyright © Crookston Custom Designs 6/7/2014



DOOR SCHEDULE					
NUMBER	QTY	FLOOR	DIMENSIONS	R/O	COMMENTS
D01	3	1	(2) 30"X80"X1 3/8" IN	62X82 1/2	
D02	1	1	108"X96"X1 3/4" L	110X98 1/2	
D03	1	1	216"X96"X1 3/4" L	218X98 1/2	
D04	1	1	28"X80"X1 3/8" R IN	30X82 1/2	
D05	1	1	32"X80"X1 3/8" L IN	34X82 1/2	
D06	1	1	35 1/2"X80"X1 3/8" R IN	37 1/2X82 1/2	
D07	1	1	36"X80"X1 3/4" L EX	38X82 1/2	
D08	1	1	36"X80"X1 3/4" L IN	38X82 1/2	
D09	1	1	36"X80"X1 3/8" L EX	38X82 1/2	
D10	1	1	36"X80"X1 3/8" L IN	38X82 1/2	
D11	2	1	36"X80"X1 3/8" R IN	38X82 1/2	
D12	1	1	72"X80"X1 3/4" L EX	74X82 1/2	
D13	1	1	72"X98"X1 3/4" L EX	72X98	
D14	3	2	(2) 24"X80"X1 3/8" IN	50X82 1/2	
D15	3	2	30"X80"X1 3/8" R IN	32X82 1/2	
D16	2	2	32"X80"X1 3/8" L IN	34X82 1/2	
D17	1	2	32"X80"X1 3/8" R IN	34X82 1/2	
D18	1	2	36"X80"X1 3/8" L IN	38X82 1/2	

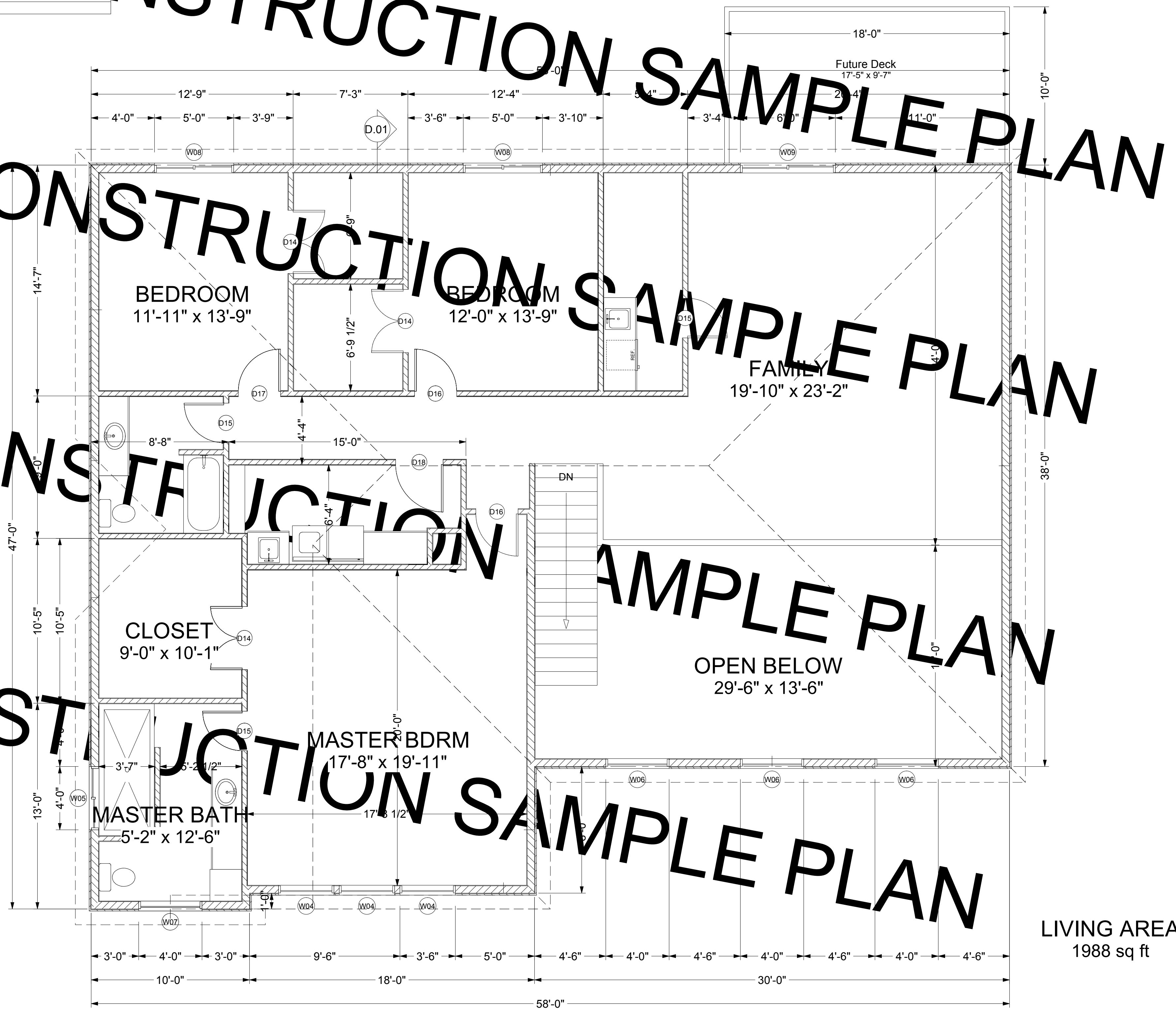
WINDOW SCHEDULE						
NUMBER	QTY	FLOOR	DIMENSIONS	R/O	DESCRIPTION	COMMENTS
W01	1	1	48"X48"LS	48X48	LEFT SLIDING	
W02	3	1	60"X48"LS	60X48	LEFT SLIDING	
W03	1	1	72"X60"LS	72X60	LEFT SLIDING	
W04	3	2	42"X54"SH	42X54	SINGLE HUNG	
W05	1	2	48"X24"LS	48X24	LEFT SLIDING	
W06	3	2	48"X48"FX	48X48	FIXED GLASS	
W07	1	2	48"X54"SH	48X54	SINGLE HUNG	
W08	2	2	60"X48"LS	60X48	LEFT SLIDING	
W09	1	2	72"X48"LS	72X48	LEFT SLIDING	

NOT FOR CONSTRUCTION SAMPLE PLAN

NOT FOR CONSTRUCTION SAMPLE PLAN

NOT FOR CONSTRUCTION SAMPLE PLAN

NOT FOR CONSTRUCTION SAMPLE PLAN



LIVING AREA
1988 sq ft

SECOND FLOOR PLAN



DESCRIPTION
STOCK PLAN
DATE
6/7/2014

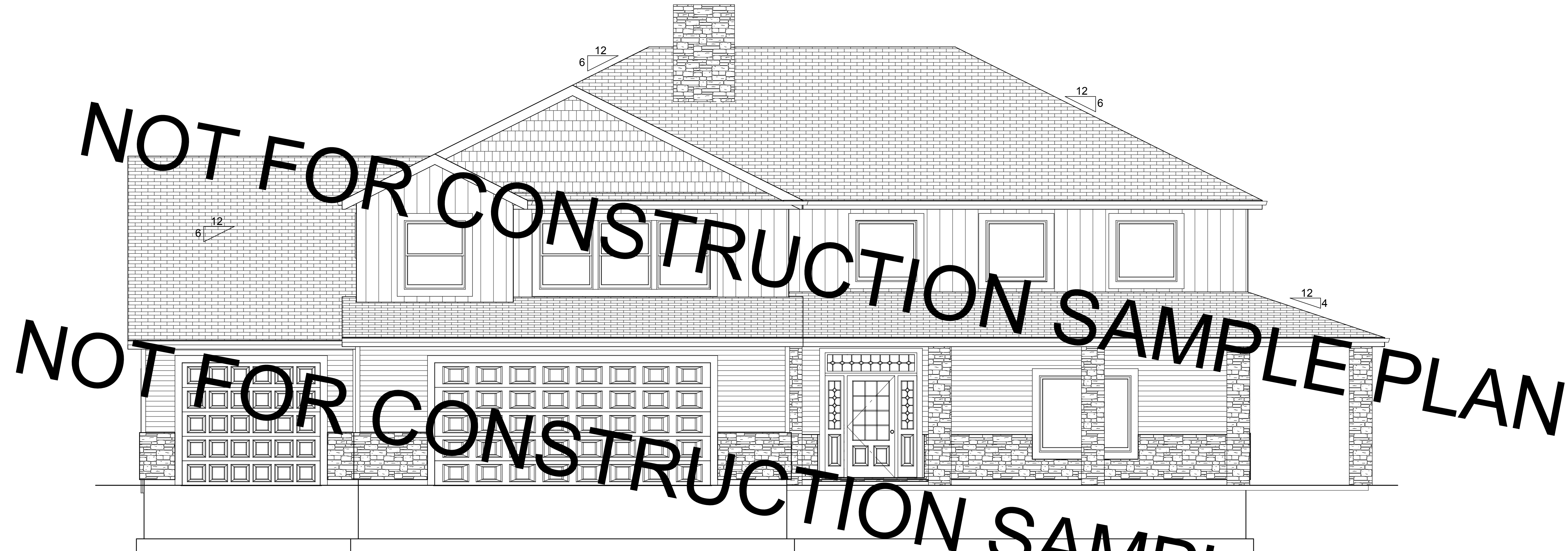
SHEET TITLE:
UPPER FLOOR PLAN

PROJECT DESCRIPTION:

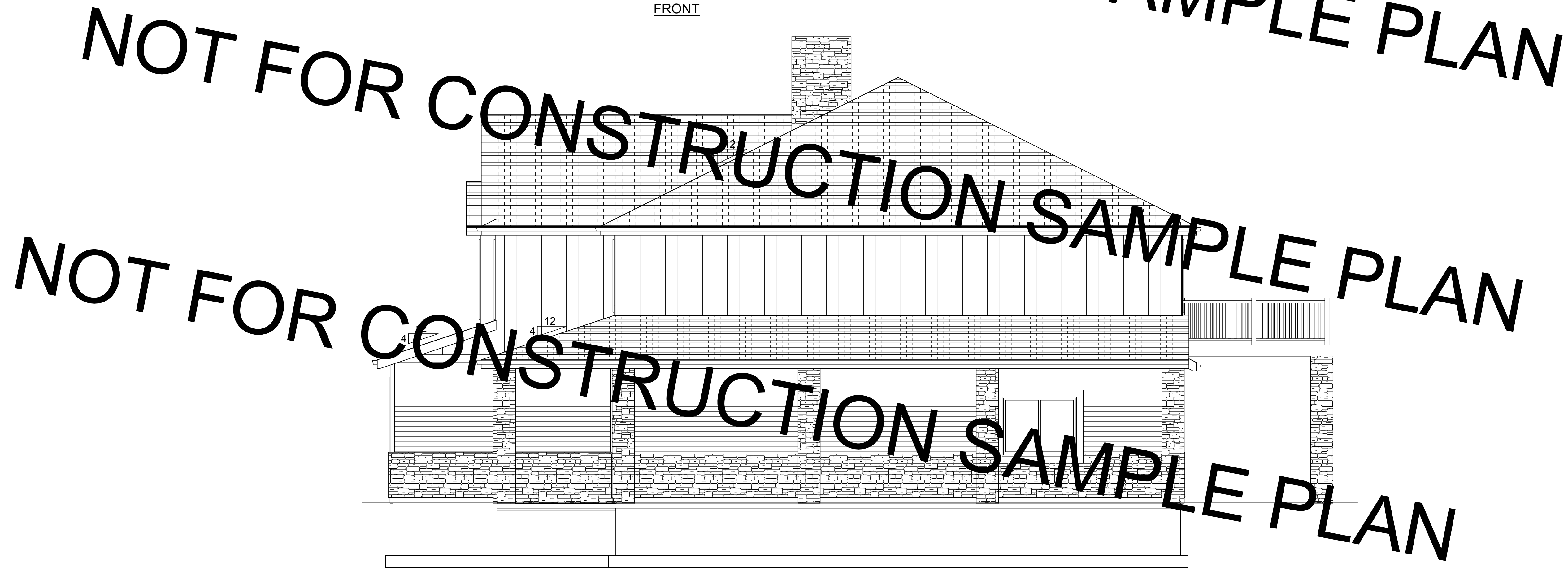
THESE PLANS DO NOT HAVE ARCHITECTURAL OR ENGINEERING SIGNATURE, SEAL OR STAMP. IT IS THE RESPONSIBILITY OF THE HOME OWNER OR CONTRACTOR TO OBTAIN ONE TO VERIFY ALL BEAMS, DIMENSIONS, CONNECTIONS, STRUCTURAL STABILITY AND ALL DETAILS ASSOCIATED WITH THE CONSTRUCTION AND STABILITY OF THE STRUCTURE. THESE DRAWINGS ARE ONLY TO BE USED FOR THE CONSTRUCTION OF A SINGLE STRUCTURE. PLEASE VISIT WWW.CROOKSTONDESIGNS.COM FOR MORE DETAILS.

DRAWINGS PROVIDED BY:
CrookstonDesigns.com
Phone: (435) 757-2906
1712 East 2450 North
North Logan, Utah 84341
Fax: (866) 801-0230
www.CrookstonDesigns.com

Plan #
12026.00
SCALE:
1/4" = 1'
SHEET:
4



FRONT



RIGHT

copyright © Crookston Custom Designs 6/7/2014



DESCRIPTION
STOCK PLAN
DATE
6/7/2014

SHEET TITLE:
ELEVATIONS

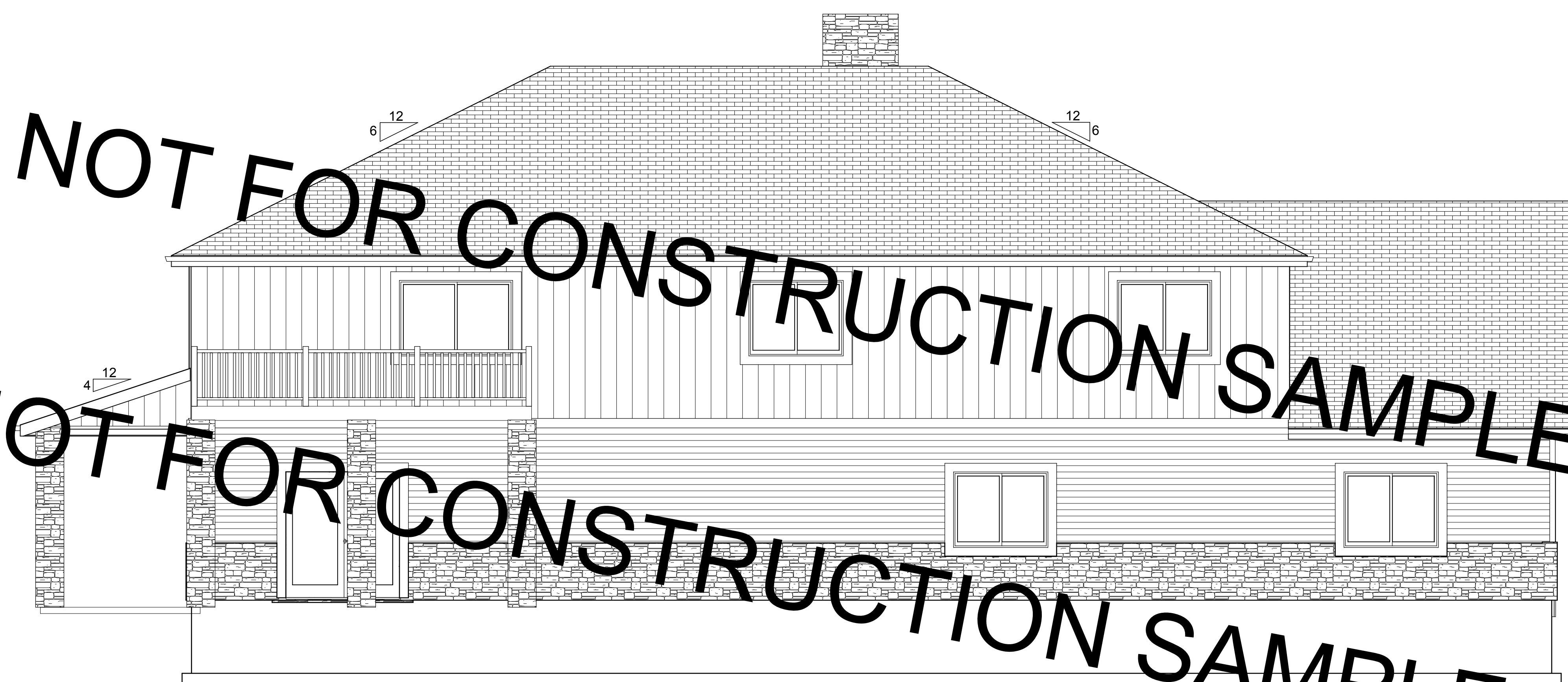
PROJECT DESCRIPTION:

THESE PLANS DO NOT HAVE ARCHITECTURAL OR ENGINEERING SIGNATURE, SEAL OR STAMP. IT IS THE RESPONSIBILITY OF THE HOME OWNER OR CONTRACTOR TO OBTAIN ONE TO VERIFY ALL BEAMS, DIMENSIONS, CONNECTIONS, STRUCTURAL STABILITY AND ALL DETAILS ASSOCIATED WITH THE CONSTRUCTION AND STABILITY OF THE STRUCTURE. THESE DRAWINGS ARE ONLY TO BE USED FOR THE CONSTRUCTION OF A SINGLE STRUCTURE. PLEASE VISIT WWW.CROOKSTONDESIGNS.COM FOR MORE DETAILS.

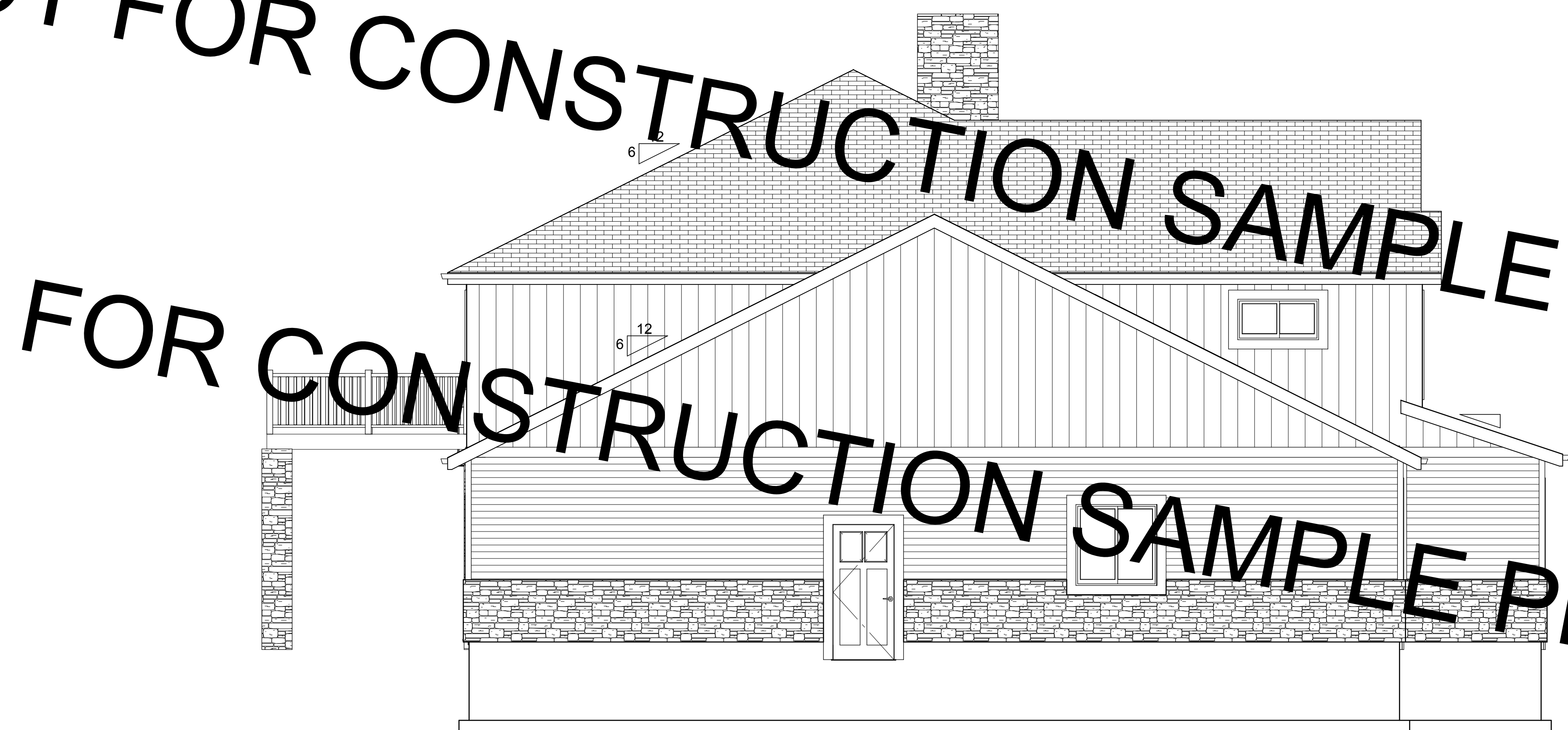
DRAWINGS PROVIDED BY:
CrookstonDesigns.com
1712 East 2450 North
North Logan, Utah 84341
Phone: (435) 757-2906
Fax: (866) 801-0230
www.CrookstonDesigns.com

Plan #
12026.00
SCALE:
1/4" = 1'
SHEET:
5

copyright © Crookston Custom Designs 6/7/2014



BACK



LEFT

NOT FOR CONSTRUCTION SAMPLE PLAN

NOT FOR CONSTRUCTION SAMPLE PLAN

NOT FOR CONSTRUCTION SAMPLE PLAN

copyright © Crookston Custom Designs 6/7/2014



DESCRIPTION
STOCK PLAN
DATE
6/7/2014

SHEET TITLE:
ELEVATIONS
PROJECT DESCRIPTION:

THESE PLANS DO NOT HAVE ARCHITECTURAL OR ENGINEERING SIGNATURE, SEAL OR STAMP. IT IS THE RESPONSIBILITY OF THE HOME OWNER OR CONTRACTOR TO OBTAIN ONE TO VERIFY ALL BEAMS, DIMENSIONS, CONNECTIONS, STRUCTURAL STABILITY AND ALL DETAILS ASSOCIATED WITH THE CONSTRUCTION AND STABILITY OF THE STRUCTURE. THESE DRAWINGS ARE ONLY TO BE USED FOR THE CONSTRUCTION OF A SINGLE STRUCTURE. PLEASE VISIT WWW.CROOKSTONDESIGNS.COM FOR MORE DETAILS.

DRAWINGS PROVIDED BY:
CrookstonDesigns.com
1712 East 2450 North
North Logan, Utah 84341
Phone: (435) 757-2906
Fax: (866) 801-0230
www.CrookstonDesigns.com

Plan #
12026.00

SCALE:
1/4" = 1'

SHEET:

6

copyright © Crookston Custom Designs 6/7/2014



DESCRIPTION
STOCK PLAN
DATE
6/7/2014

SHEET TITLE:
SECTIONS & DETAILS

PROJECT DESCRIPTION:

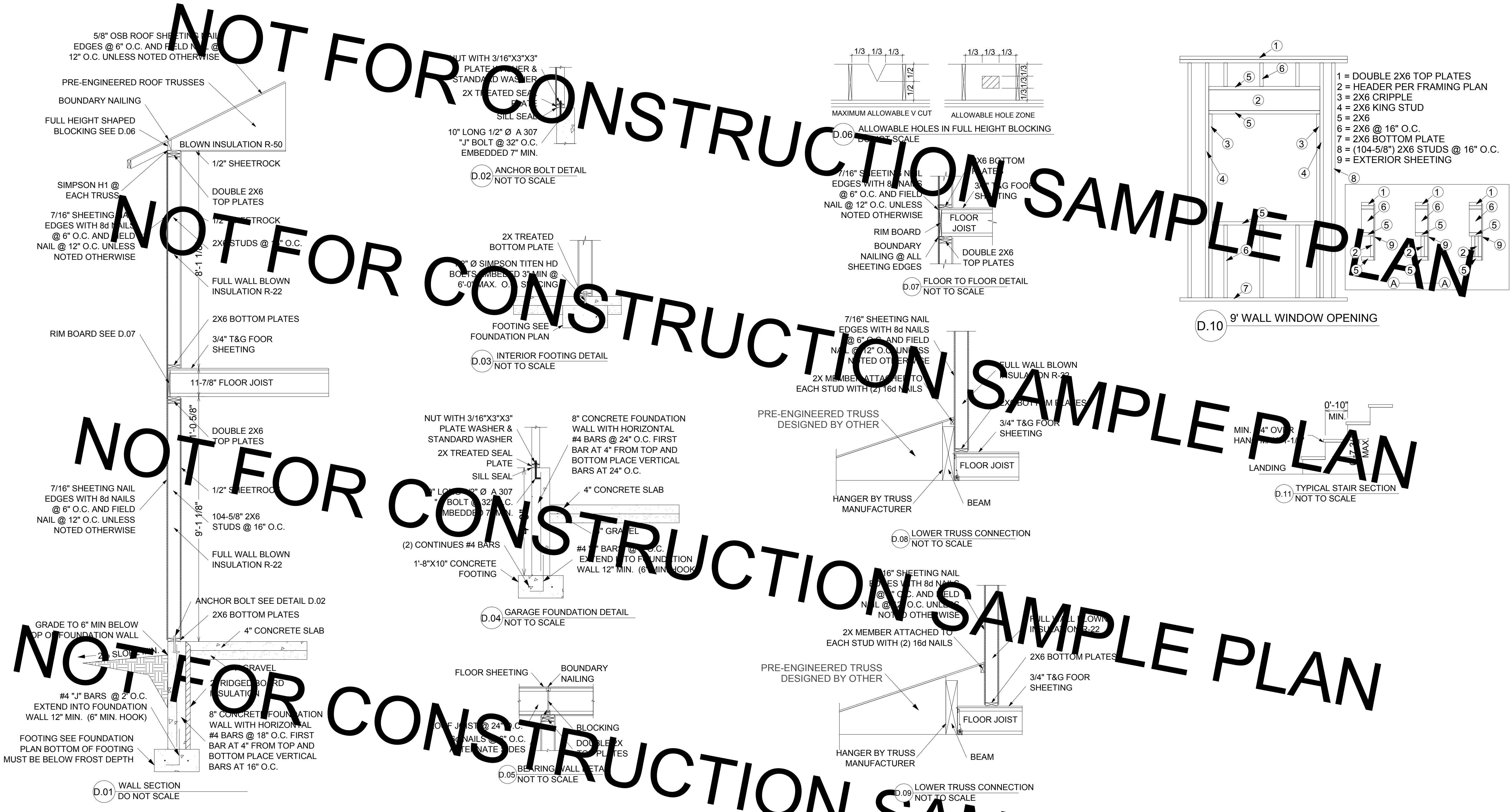
THESE PLANS DO NOT HAVE ARCHITECTURAL OR ENGINEERING SIGNATURE, SEAL OR STAMP. IT IS THE RESPONSIBILITY OF THE HOME OWNER OR CONTRACTOR TO OBTAIN ONE TO VERIFY ALL BEAMS, DIMENSIONS, CONNECTIONS, STRUCTURAL STABILITY AND ALL DETAILS ASSOCIATED WITH THE CONSTRUCTION AND STABILITY OF THE STRUCTURE. THESE DRAWINGS ARE ONLY TO BE USED FOR THE CONSTRUCTION OF A SINGLE STRUCTURE. PLEASE VISIT WWW.CROOKSTONDESIGNS.COM FOR MORE DETAILS.

DRAWINGS PROVIDED BY:
CrookstonDesigns.com
Phone: (435) 757-2906
1712 East 2450 North
North Logan, Utah 84341
Fax: (866) 801-0230
www.CrookstonDesigns.com

Plan #
12026.00
SCALE:
1/4" = 1'
SHEET:
7

copyright © Crookston Custom Designs 6/7/2014

copyright © Crookston Custom Designs 6/7/2014



FASTENING SCHEDULE

PLAN SYMBOLS

	WINDOW OPENING
	DOOR OPENING
	DOUBLE WINDOW OPENING
	COOK RANGE WITH OVEN
	REFRIGERATOR
	LAUNDRY WASHER & DRYER
	DISH WASHER
	WALL OVEN

	DOUBLE KITCHEN SINK
	SINGLE UTILITY SINK
	BATHROOM SINK
	PEDESTAL SINK
	TOILET
	BATH TUB WITH SHOWER
	LARGE SOAKER TUB
	SHOWER
	WATER HEATER
	FORCED AIR FURNACE
	INSERT FIRE PLACE
	WOOD STOVE

CONNECTION	FASTENING ^{a,m}	LOCATION
1. Joist to sill or girder	3 - 8d common (2 1/2" x 0.131") 3 - 3" x 0.131" nails 3 - 3" 14 gage staples	toenail
2. Bridging to joist	2 - 8d common (2 1/2" x 0.131") 2 - 3" x 0.131" nails 2 - 3" 14 gage staples	toenail each end
3. 1" x 8" subfloor to each joist	2 - 8d common (2 1/2" x 0.131")	face nail
4. Wider than 1" x 8" subfloor to each joist	3 - 8d common (2 1/2" x 0.131")	face nail
5. 2" subfloor to joist or girder	3 - 16d common (3 1/2" x 0.162")	blind and face nail
6. Sole plate to joist or blocking	1 - 8d (7/16" x 0.131") at 6" o.c. 3" x 0.131" nails at 6" o.c. 3" 14 gage staples at 12" o.c.	typical face nail
Sole plate to joist or blocking at braced wall panel	3 - 16d (3 1/2" x 0.135") at 16" o.c. 4 - 3" x 0.131" nails at 16" o.c. 4 - 3" 14 gage staples at 16" o.c.	braced wall panel
7. Top plate to stud	2 - 16d common (3 1/2" x 0.162") 3 - 3" x 0.131" nails 3 - 3" 14 gage staples	end nail
8. Stud to sole plate	4 - 8d common (2 1/2" x 0.131") 4 - 3" x 0.131" nails 3 - 3" 14 gage staples	toenail
9. Double studs	2 - 16d common (3 1/2" x 0.162") 3 - 3" x 0.131" nails 3 - 3" 14 gage staples	end nail
10. Double top plates	16d (3 1/2" x 0.135") at 16" o.c. 3" x 0.131" nail at 12" o.c. 3" 14 gage staple at 12" o.c.	typical face nail
Double top plates	8 - 16d common (3 1/2" x 0.162") 12 - 3" x 0.131" nails 12 - 3" 14 gage staples	lap splice
11. Blocking between joists or rafters to top plate	3 - 8d common (2 1/2" x 0.131") 3 - 3" x 0.131" nails 3 - 3" 14 gage staples	toenail
12. Rim joist to top plate	8d (2 1/2" x 0.131") at 6" o.c. 3" x 0.131" nail at 6" o.c. 3" 14 gage staples at 12" o.c.	toenail
13. Top plates, laps and intersections	3 - 16d common (3 1/2" x 0.162") 3 - 3" x 0.131" nails 3 - 3" 14 gage staples	face nail
14. Continuous header, two pieces	16d common (3 1/2" x 0.162")	o.c. along edge
15. Ceiling joists to plate	3 - 8d common (2 1/2" x 0.131") 5 - 3" x 0.131" nails 5 - 3" 14 gage staples	toenail
16. Continuous header to stud	4 - 8d common (2 1/2" x 0.131")	toenail
17. Ceiling joists, laps over partitions (see Section 2308.10.4.1, Table 2308.10.4.1)	3 - 16d common (3 1/2" x 0.162") min., Table 2308.10.4.1 4 - 3" x 0.131" nails 4 - 3" 14 gage staples	face nail
18. Ceiling joists to parallel rafters (see Section 2308.10.4.1, Table 2308.10.4.1)	3 - 16d common (3 1/2" x 0.162") minimum, Table 2308.10.4.1 4 - 3" x 0.131" nails 4 - 3" 14 gage staples	face nail
19. Rafter to plate (see Section 2308.10.1, Table 2308.10.1)	3 - 8d common (2 1/2" x 0.131") 3 - 3" x 0.131" nails 3 - 3" 14 gage staples	toenail

CONNECTION	FASTENING ^{a,m}	LOCATION
20. 1" diagonal brace to each stud and plate	2 - 8d common (2 1/2" x 0.131") 2 - 3" x 0.131" nails 3 - 3" 14 gage staples	face nail
21. 1" x 8" sheathing to each bearing	3 - 8d common (2 1/2" x 0.131")	face nail
22. Wider than 1" x 8" sheathing to each bearing	3 - 8d common (2 1/2" x 0.131")	face nail
23. Built-up corner studs	16d common (3 1/2" x 0.162") 3" x 0.131" nails 3" 14 gage staples	24" o.c. 16" o.c. 16" o.c.
24. Built-up girder and beams	20d common (4" x 0.192") 32" o.c. 3" x 0.131" nail at 24" o.c. 3" 14 gage staple at 24" o.c. 2 - 20d common (4" x 0.192") 3 - 3" x 0.131" nails 3 - 3" 14 gage staples	face nail at top and bottom staggered on opposite sides face nail at ends and at each splice
25. Double joists	16d common (3 1/2" x 0.162")	at each bearing
26. Collar tie to rafter	3 - 8d common (2 1/2" x 0.148") 4 - 3" x 0.131" nails 4 - 3" 14 gage staples	face nail
27. Jack rafter to hip	3 - 10d common (3" x 0.148") 4 - 3" x 0.131" nails 4 - 3" 14 gage staples 2 - 16d common (3 1/2" x 0.162") 3 - 3" x 0.131" nails 3 - 3" 14 gage staples	toenail face nail
28. Roof rafter to 2-by ridge beam	2 - 16d common (3 1/2" x 0.162") 3 - 3" x 0.131" nails 3 - 3" 14 gage staples	toenail
29. Joist to band joist	3 - 16d common (3 1/2" x 0.162") 4 - 3" x 0.131" nails 4 - 3" 14 gage staples	face nail
30. Ledger strip	3 - 16d common (3 1/2" x 0.162") 4 - 3" x 0.131" nails 4 - 3" 14 gage staples	face nail at each joist
31. Wood structural panels and particleboard ^b Subfloor, roof and wall sheathing (to framing)	1/2" and less 19/32" to 3/4"	6d ^c 2 3/8" x 0.113" nail ⁿ 1 3/4" 16 gage ^o 8d ^d or 6d ^e 2 3/8" x 0.113" nail ^p 2" 16 gage staple ^p
Single floor (combination subfloor/underlayment to framing)	7/8" to 1" 1 1/8" and less 3/4" and less 7/8" to 1" 1 1/8" to 1 1/2"	8d ^c 10d ^d or 8d ^e 6d ^e 8d ^d 11d ^d or 10d ^d
32. Panel siding (to framing)	1/2" or less 5/8"	6d ^c 8d ^d
33. Fiberboard sheathing ^g	1/2"	No. 11 gage roofing nail ^h 6d common nail (2" x 0.113") No. 16 gage staple ⁱ No. 11 gage roofing nail ^h 8d common nail (2 1/2" x 0.131") No. 16 gage staple ⁱ
34. Interior paneling	1/4" 3/8"	4d ^j 6d ^k

- a. Common or box nails are permitted to be used except where otherwise stated.
- b. Nails spaced at 6 inches on center at edges, 12 inches at intermediate supports except 6 inches at supports where spans are 48 inches or more. For nailing of wood structural panel and particleboard diaphragms and shear walls, refer to Section 2305. Nails for wall sheathing are permitted to be common, box or casing.
- c. Common or deformed shank (6d - 2" x 0.113"; 8d - 2 1/2" x 0.131"; 10d - 3" x 0.148").
- d. Common (6d - 2" x 0.113"; 8d - 2 1/2" x 0.131"; 10d - 3" x 0.148").
- e. Deformed shank (6d - 2" x 0.113"; 8d - 2 1/2" x 0.131"; 10d - 3" x 0.148").
- f. Corrosion-resistant siding (6d - 1 7/8" x 0.106"; 8d - 2 3/8" x 0.128") or casing (6d - 2" x 0.099"; 8d - 2 1/2" x 0.113") nail.
- g. Fasteners spaced 3 inches on center at exterior edges and 6 inches on center at intermediate supports, when used as structural sheathing. Spacing shall be 6 inches on center on the edges and 12 inches on center at intermediate supports for nonstructural applications.
- h. Corrosion-resistant roofing nails with 7/16-inch-diameter head and 1 1/2-inch length for 1/2-inch sheathing and 13/4-inch length for 25/32-inch sheathing.

- i. Corrosion-resistant with nominal 7/16-inch crown or 1-inch crown and 1 1/4-inch length for 1/2-inch sheathing and 1-inch length for 25/32-inch sheathing. Panel supports at 12 inches (24 inches if strength axis in the long direction of the panel, unless otherwise marked).
- j. Casing (1 1/2" x 0.080") or finish (1 1/2" x 0.072") nails spaced 6 inches on panel edges, 12 inches at intermediate supports.
- k. Panel supports at 24 inches. Casing or finish nails spaced 6 inches on panel edges, 12 inches at intermediate supports.
- l. For roof sheathing applications, 8d nails (2 1/2" x 0.113") are the minimum required for wood structural panels.
- m. Staples shall have a minimum crown width of 7/16 inch.
- n. For roof sheathing applications, fasteners spaced 4 inches on center at edges, 8 inches at intermediate supports.
- o. Fasteners spaced 4 inches on center at edges, 8 inches at intermediate supports for subfloor and wall sheathing and 3 inches on center at edges, 6 inches at intermediate supports for roof sheathing.
- p. Fasteners spaced 4 inches on center at edges, 8 inches at intermediate supports.

NOT FOR CONSTRUCTION SAMPLE PLAN

copyright © Crookston Custom Designs 6/7/2014



DESCRIPTION
STOCK PLAN
DATE
6/7/2014

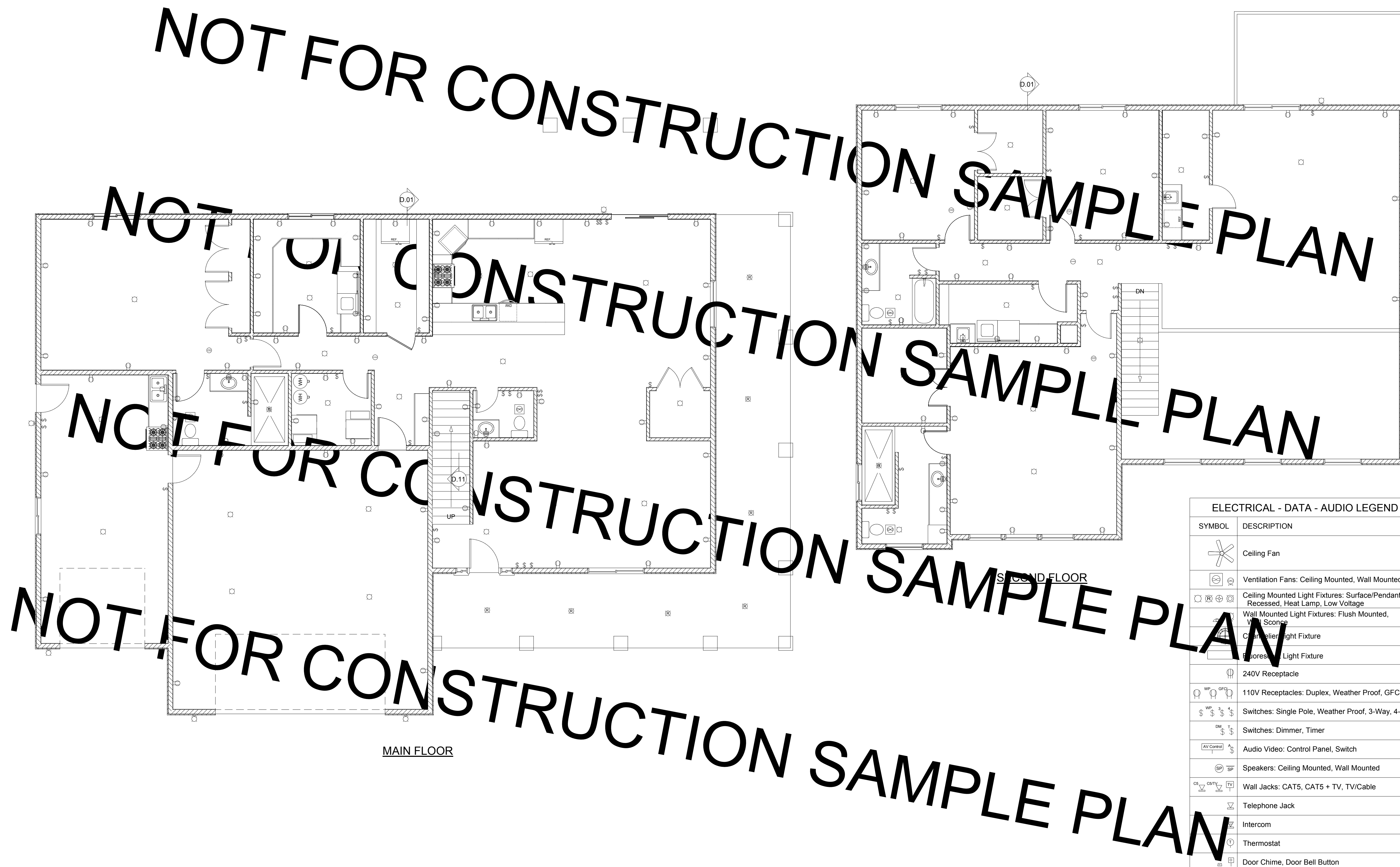
SHEET TITLE:
LEGEND AND NAILING SCHEDULE

PROJECT DESCRIPTION:

THESE PLANS DO NOT HAVE ARCHITECTURAL OR ENGINEERING SIGNATURE, SEAL OR STAMP. IT IS THE RESPONSIBILITY OF THE HOME OWNER OR CONTRACTOR TO OBTAIN ONE TO VERIFY ALL BEAMS, DIMENSIONS, CONNECTIONS, STRUCTURAL STABILITY AND ALL DETAILS ASSOCIATED WITH THE CONSTRUCTION AND STABILITY OF THE STRUCTURE. THESE DRAWINGS ARE ONLY TO BE USED FOR THE CONSTRUCTION OF A SINGLE STRUCTURE. PLEASE VISIT WWW.CROOKSTONDESIGNS.COM FOR MORE DETAILS.

DRAWINGS PROVIDED BY:
CrookstonDesigns.com
Phone: (435) 757-2906
1712 East 2450 North
North Logan, Utah 84341
Fax: (866) 801-0230
www.CrookstonDesigns.com

Plan #
12026.00
SCALE:
1/4" = 1'
SHEET:
8



ELECTRICAL - DATA - AUDIO LEGEND	
SYMBOL	DESCRIPTION
	Ceiling Fan
	Ventilation Fans: Ceiling Mounted, Wall Mounted
	Ceiling Mounted Light Fixtures: Surface/Pendant, Recessed, Heat Lamp, Low Voltage
	Wall Mounted Light Fixtures: Flush Mounted, Wall Sconce
	Chandelier Light Fixture
	Recessed Light Fixture
	240V Receptacle
	110V Receptacles: Duplex, Weather Proof, GFCI
	Switches: Single Pole, Weather Proof, 3-Way, 4-Way
	Switches: Dimmer, Timer
	Audio Video: Control Panel, Switch
	Speakers: Ceiling Mounted, Wall Mounted
	Wall Jacks: CAT5, CAT5 + TV, TV/Cable
	Telephone Jack
	Intercom
	Thermostat
	Door Chime, Door Bell Button
	Smoke Detectors: Ceiling Mounted, Wall Mounted
	CO/Smoke Detectors: Ceiling Mounted, Wall Mounted
	Electrical Breaker Panel



DESCRIPTION	STOCK PLAN
DATE	6/7/2014

SHEET TITLE:
ELECTRICAL

PROJECT DESCRIPTION:

THESE PLANS DO NOT HAVE ARCHITECTURAL OR ENGINEERING SIGNATURE, SEAL OR STAMP. IT IS THE RESPONSIBILITY OF THE HOME OWNER OR CONTRACTOR TO OBTAIN ONE TO VERIFY ALL BEAMS, DIMENSIONS, CONNECTIONS, STRUCTURAL STABILITY AND ALL DETAILS ASSOCIATED WITH THE CONSTRUCTION AND STABILITY OF THE STRUCTURE. THESE DRAWINGS ARE ONLY TO BE USED FOR THE CONSTRUCTION OF A SINGLE STRUCTURE. PLEASE VISIT WWW.CROOKSTONDESIGNS.COM FOR MORE DETAILS.

DRAWINGS PROVIDED BY:
CrookstonDesigns.com
Phone: (435) 757-2906
1712 East 2450 North
North Logan, Utah 84341
Fax: (866) 801-0230
www.CrookstonDesigns.com

Plan #
12026.00

SCALE:
1/4" = 1'

SHEET:
9